

# Health NZ Stakeholder hui

14 August 2024

# Karakia

Tūria, tūria te mata hau nō Rangi  
Tūria, tūria te mata hau nō Papa  
Paiheretia te tangata ki te kawa tupua,  
ki te kawa tawhito  
He kawa ora! He kawa ora!  
He kawa ora ki te tangata  
He kawa ora ki te whānau  
He kawa ora ki te iti, ki te rahi  
He kawa tātaki ki au mau ai  
Tūturu o whiti, whakamaua kia tīna  
Hui e! Tāiki e!

# Presenting today

- Margie Apa, Chief Executive Health New Zealand
- Professor Lester Levy, Commissioner Health New Zealand
- Hikitia Ropata, Chair of the Āti Awa Toa Hauora Iwi-Māori Partnership Board

# Meet our new Deputy CEOs



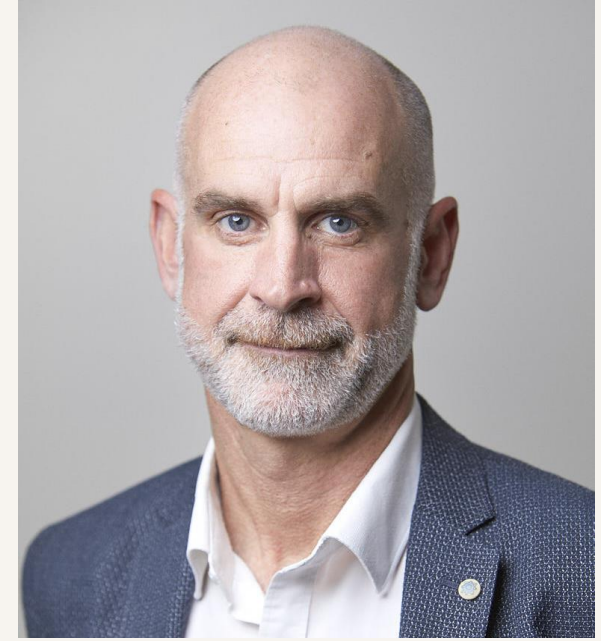
**Mark Shepherd**  
Northern



**Catherine Cronin**  
Midland | Te Manawa  
Taki



**Robyn Shearer**  
Central | Ikaroa



**Martin Keogh**  
South Island | Te  
Waipounamu



# ĀTI AWA TOA HAUORA PARTNERSHIP BOARD

Our moemoeā, mission and role and our key actions for 2024-2025

June 2024

# ROHE | REGION

**We represent:**

**TWO IWI:**

Te Āti Awa

Ngāti Toa Rangatira

**THREE RŪNANGA:**

Ātiawa ki Whakarongotai

Te Rūnanganui o Te Āti Awa

Te Rūnanga o Toa Rangatira

**FOUR WHAITUA:** Poneke, Porirua, Kapiti,  
Te Awa Kairangi

Population = 490,000 approx

Māori Population = 72,000 approx



# Mana whakahaere | board members

## Tio Taiaki

Te Ātiawa ki  
Whakarongotai, Ng  
Tūwharetoa, Te Āti  
Haunui-ā-Pāpārang  
*Te Āti Awa ki  
Whakarongotai Rep  
Deputy Chair*



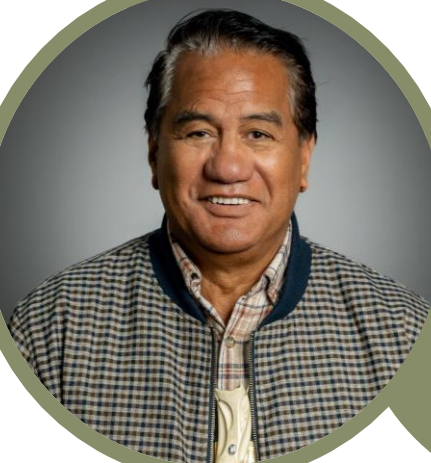
## Dr Vanessa Caldwell

Kai Tahu Te  
Rapuwai, Waitaha,  
Kati Māmoe,  
*Taurahere Rep*



## Hinemoa Priest

Te Āti Awa,  
Ngaruahine ki te  
Rangi  
*Te Āti Awa  
Rep*



**Dr Taku Parai**  
Ngāti Toa Rangatira  
*Kaumātua*

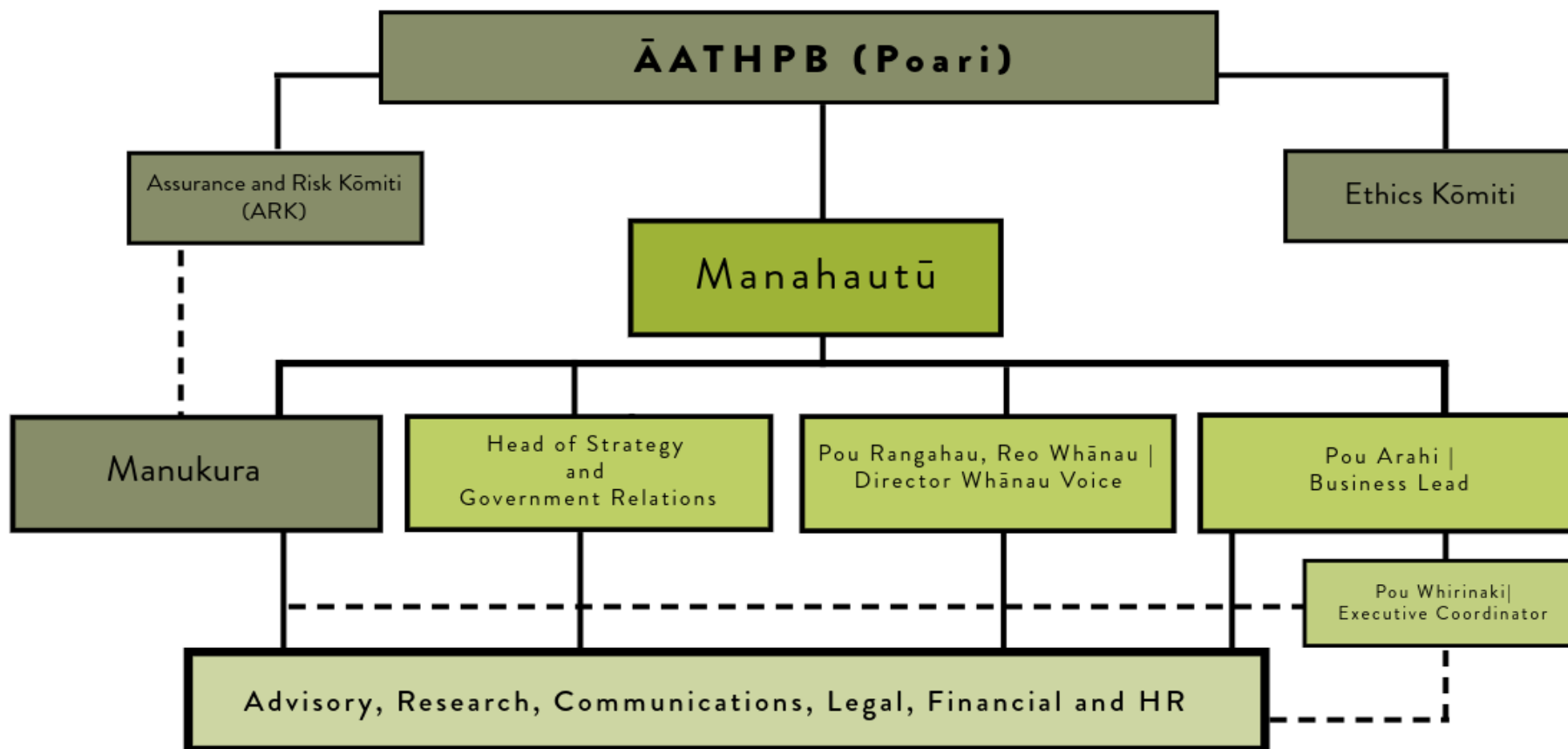
**Tane Cassi**  
Ngāpuhi  
*Taurahere Rep*



**Hikitia Ropata**  
Ngāti Toa Rangatira,  
āti Raukawa, Te Āti  
Awa, Ngāti Porou  
*Ngāti Toa Rep  
Chair/Manahautū*



# Our secretariat





# TŌ MĀTOU MOEMOEĀ | VISION

**ORANGA WHENUA, ORANGA WAI, ORANGA WHĀNAU**

**A place to stand, a place to connect, a place to belong**

TIKA

ĀTI AWA TOA HAUORA  
TOITŪ TE TIRITI

KAITIAKITANGA

LEADING A MOVEMENT TOWARDS AN ORANGA ECOSYSTEM  
FOR OUR MOKOPUNA TO THRIVE

PONO

PATUITANGA  
PARTNERSHIP

OPTIONS  
KŌWHIRITANGA

TINO RANGATIRATANGA  
SELF DETERMINATION

ACTIVE  
PROTECTION  
OF  
MANA MOTUHAKE

EQUITY  
ORITETANGA

WAIUATANGA

AROHA

We connect and unite  
whānau voices  
to ensure design, delivery  
& accessibility of health, healing  
& wellbeing services enable  
self determination  
of whānau



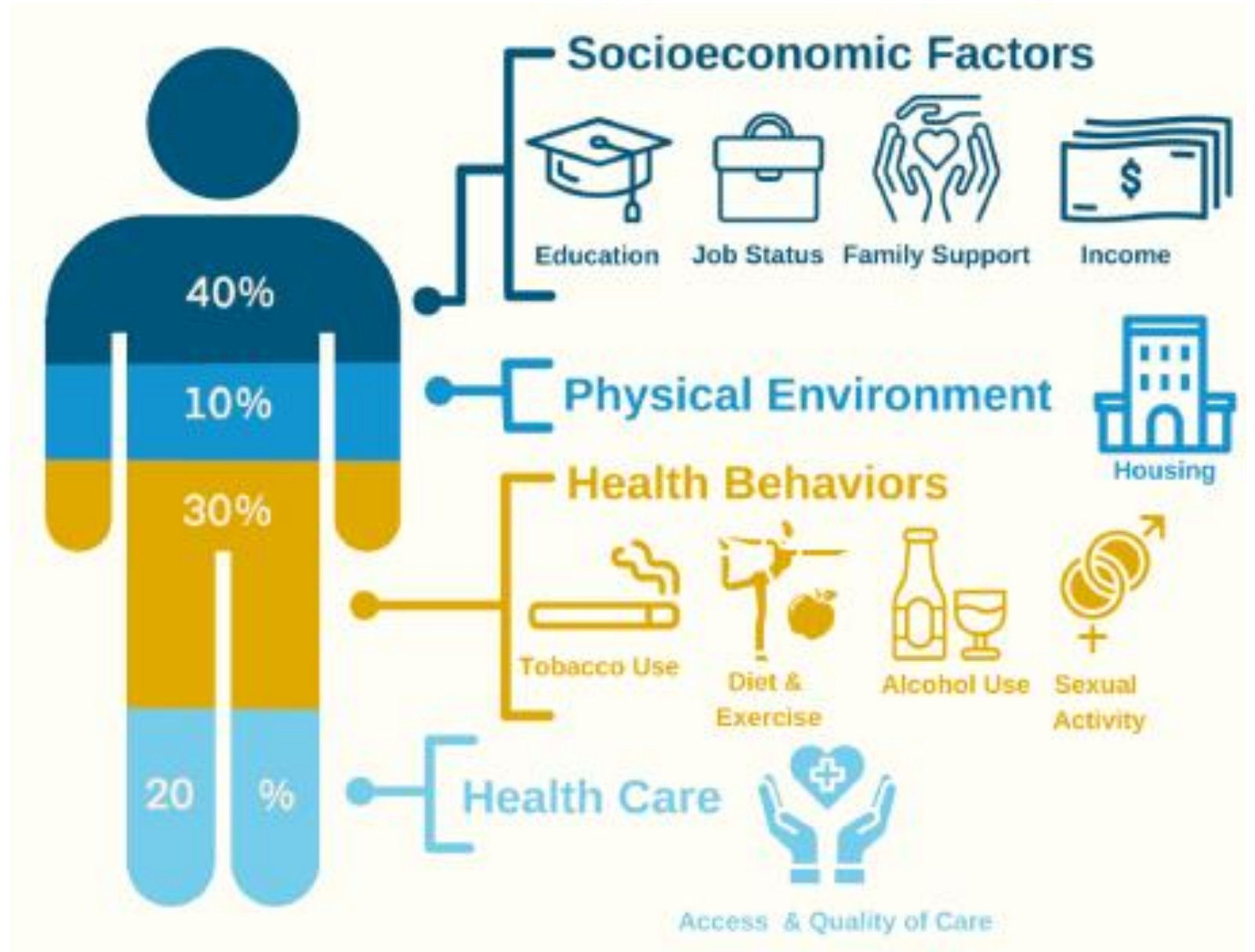
ORANGA  
WHĀNUA  
A PLACE TO STAND

ORANGA  
WAI  
A PLACE TO CONNECT

ORANGA  
WHĀNUA  
A PLACE TO BELONG

# TŌ MĀTOU MOEMOEĀ | OUR MISSION

To lead a movement towards an oranga ecosystem  
for our mokopuna to thrive



# OUR LEGISLATIVE FUNCTIONS

1. Whānau Voice – collection, protection, analysis, amplification
2. Monitoring sector performance – local/regional level
3. Priority setting – for service investment and innovation
4. **Strategic Commissioning – currently being defined and described but likely to begin with how IMPBs influence the “what and the how”.**

# Key actions for 2024-2025

- **Establish ĀATHPB Ethics Komiti – ensuring what we do is tika and pono**
- **Develop a tikanga-led framework and plan for whānau engagement**
- **Collect, protect, analyse and amplify whānau voice**

**Whānau Voice**

# Key actions for 2024–2025

- **Prototype whaitua mapping tool with HQSC**
- **Combine key data with whānau voice evidence to enrich our understanding and insights**
- **Identify indicators and data to measure oranga whenua, oranga wai and oranga whānau**
- ***State of our Oranga* reports on how the system is performing in priority areas for whānau in our rohe**

## Monitoring

# Key actions for 2024-2025

- Reimagine the systems of care that are failing our people
- Protect/promote the models whānau want and need for their oranga.
- Partner with others to address the wider determinants of oranga
- Influence systems of care design and investment.

**Priority setting  
for investment  
and innovation**



# OTHER PRESSURES

- **Government focus:**
  - Cashflow
  - Value for money
  - Targets
- **IMPB**
  - Whanau Voice SPRINT (August – Dec 2024)
  - Coalitions of Support – mahi with PHOs across rohe e.g. what would a clinical sharing network look like
  - Focus on social determinants of health
  - Regional and local focus including relationships and partnerships

Today

# Q&A session



# Karakia

Kia whakairia te tapu  
Kia wātea ai te ara  
Kia turuki whakataha ai  
Kia turuki whakataha ai  
Haumi e. Hui e. Tāiki e!

*Restrictions are moved aside  
So the pathway is clear  
To return to everyday activities.*