



# Health NZ Stakeholder hui

7 November 2024

# Karakia

Tūria, tūria te mata hau nō Rangi  
Tūria, tūria te mata hau nō Papa  
Paiheretia te tangata ki te kawa tupua,  
ki te kawa tawhito  
He kawa ora! He kawa ora!  
He kawa ora ki te tangata  
He kawa ora ki te whānau  
He kawa ora ki te iti, ki te rahi  
He kawa tātaki ki au mau ai  
Tūturu o whiti, whakamaua kia tīna  
Hui e! Tāiki e!

# Presenting today

- Dr Dale Bramley, Acting Chief Executive Health New Zealand
- Mahaki Albert (MC), Maiaka Whakaruruhau Tikanga | Chief of Tikanga
- Mark Shepherd, Deputy Chief Executive, Northern
- Karla Bergquist, Director – Specialist Mental Health and Addiction

# Government's health targets

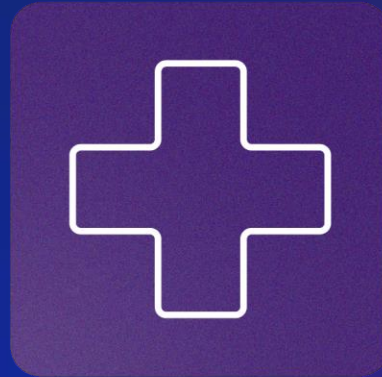
Faster cancer  
treatment



Improved  
immunisation  
for children



Shorter stays in  
emergency  
departments



Shorter wait  
times for first  
specialist  
assessment



Shorter wait  
times for  
elective  
treatment



# Health target results for Q4

Target	Q4 published result
Shorter stays in ED	71.2%
Shorter wait times for FSA (First Specialist Assessment)	61.5%
Shorter wait times for elective treatment	62.2%
Shorter wait times for cancer treatment	83.5%
Immunisation coverage for age at 24 months	76.6%

# Life expectancy trends and life expectancy gap

Figure 1: Longitudinal trends in life expectancy from 2001 to 2022, three-year aggregated estimate, New Zealand

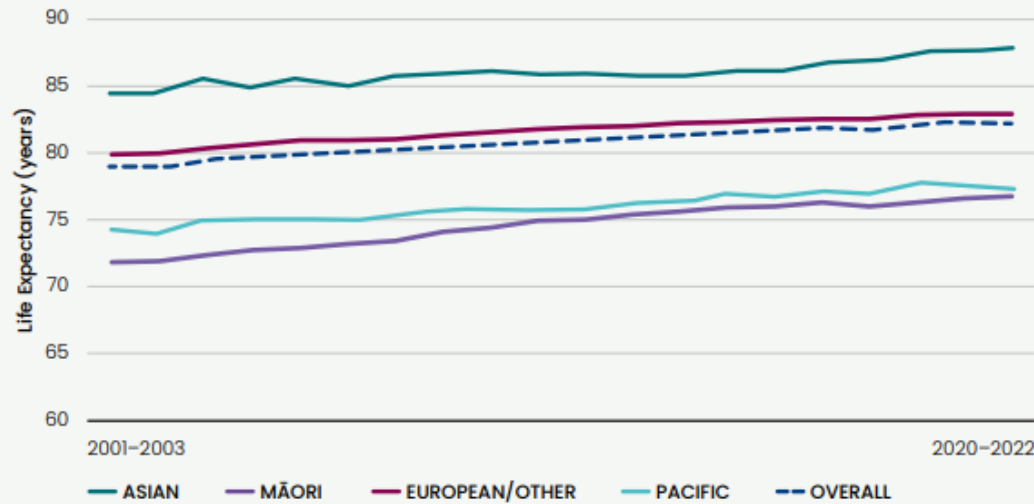


Figure 2: Longitudinal trends in the life expectancy gap for Māori and Pacific peoples compared with non-Māori/non-Pacific ethnicities from 2001 to 2022, three-year aggregated estimate, New Zealand

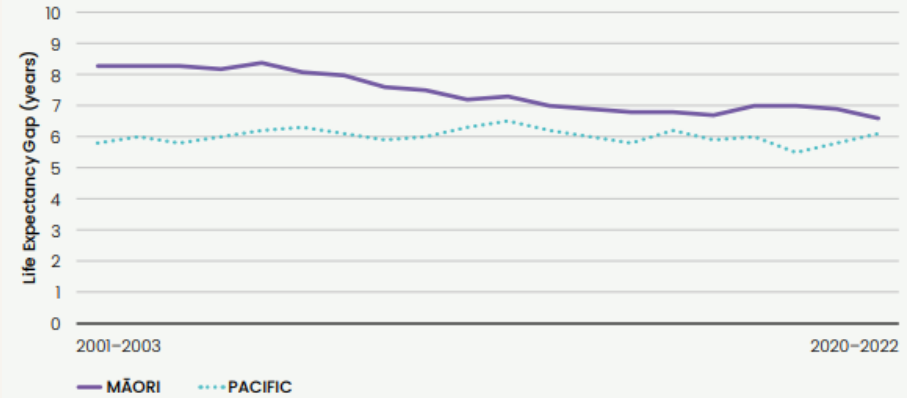
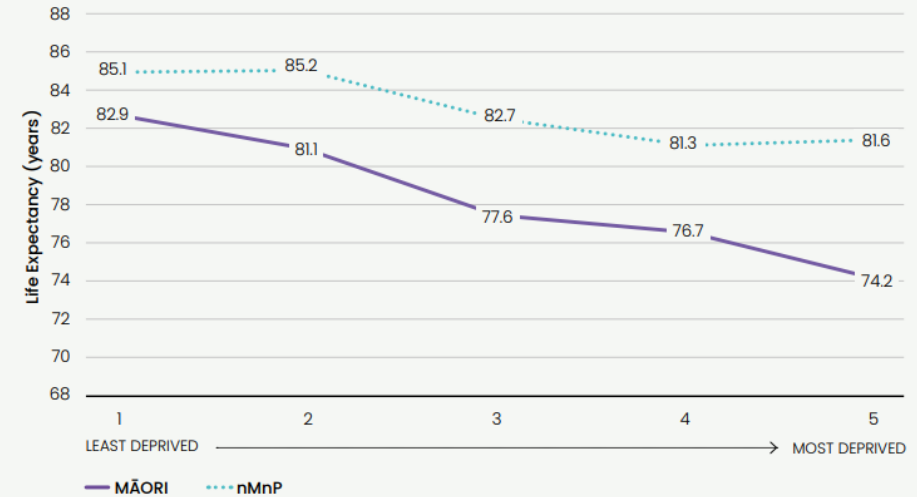
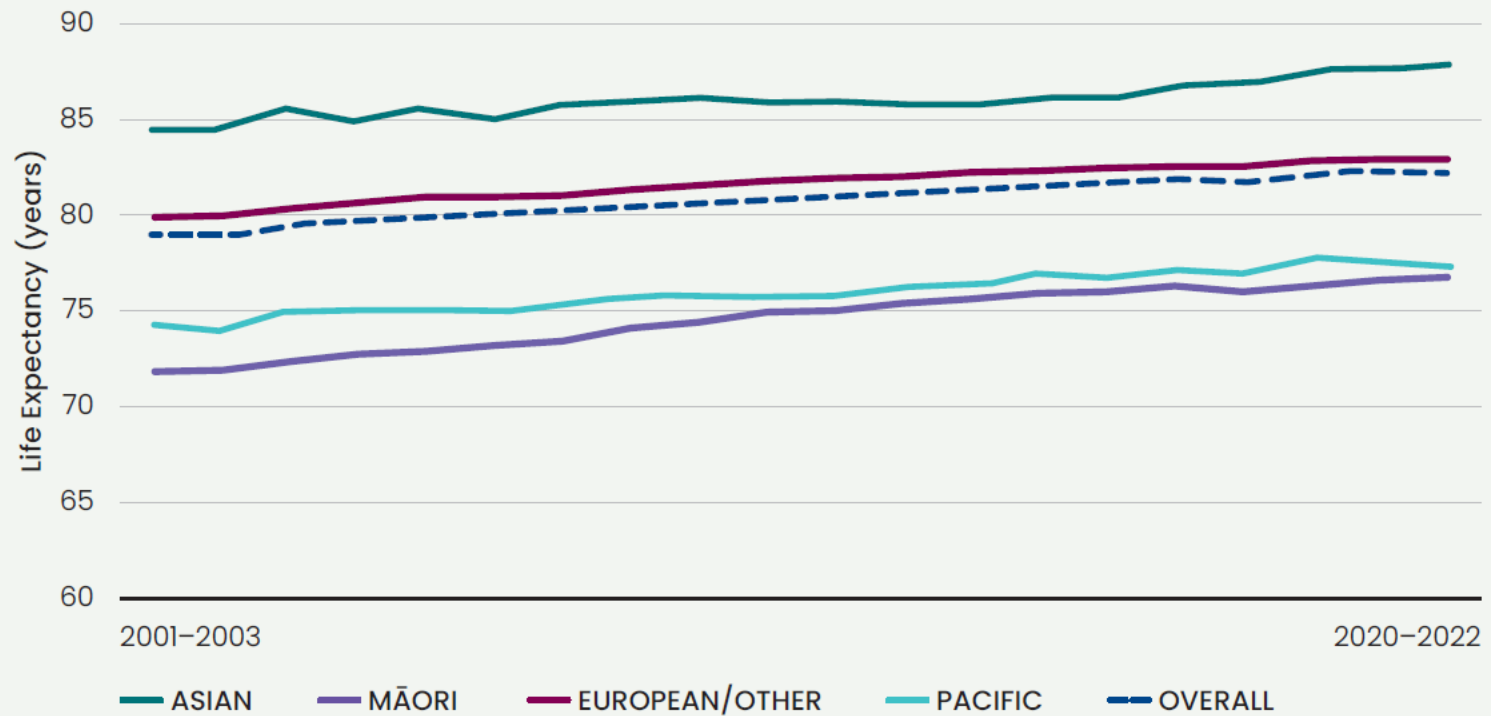


Figure 20: Life expectancy by socioeconomic status, Māori and non-Māori/non-Pacific – 2018 to 2022



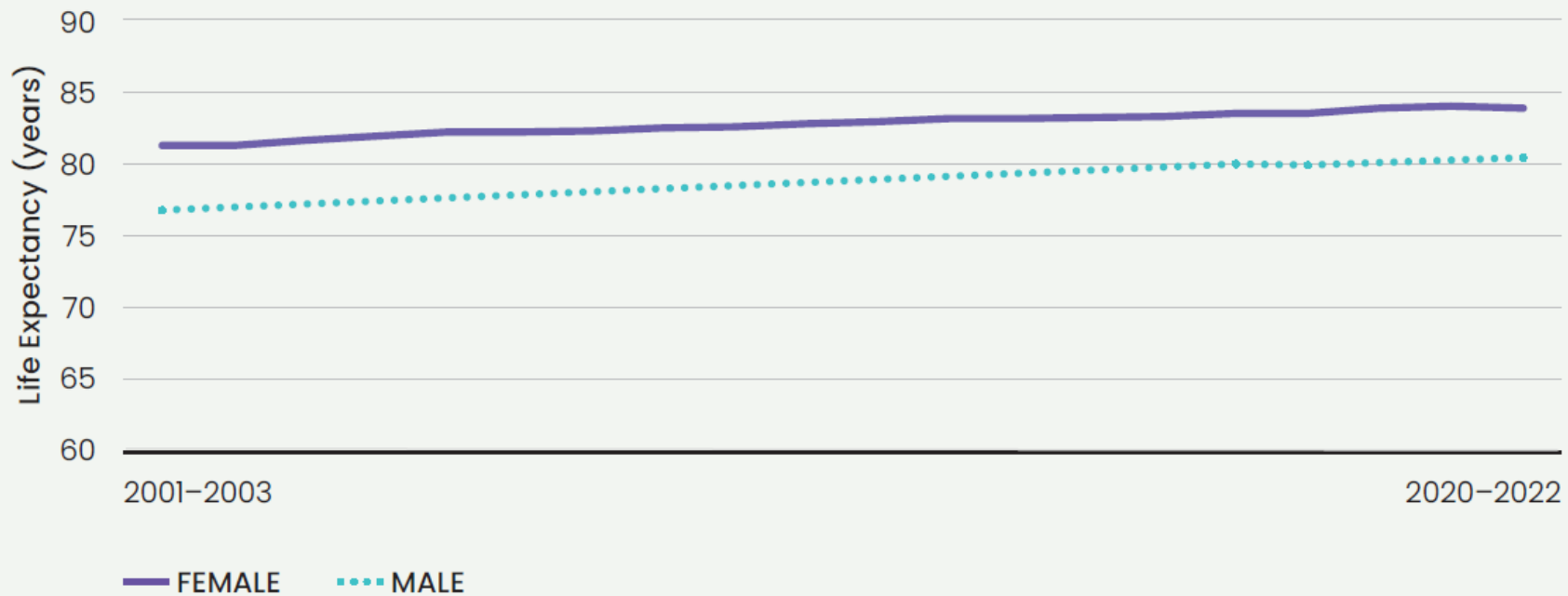
# Life expectancy by ethnicity

Figure 1: Longitudinal trends in life expectancy from 2001 to 2022, three-year aggregated estimate, New Zealand



# Life expectancy by sex

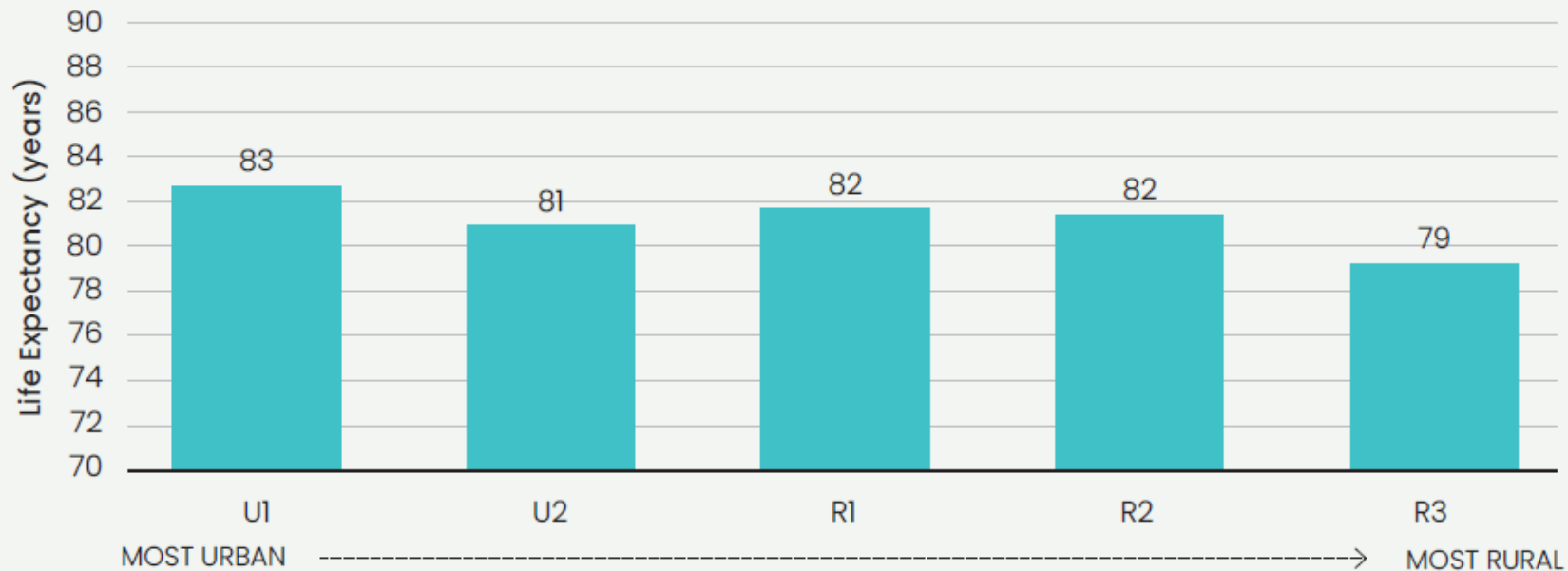
Figure 4: Longitudinal trends in life expectancy from 2001 to 2022 by sex, three-year aggregated estimate, New Zealand





# Life expectancy by rurality

Figure 7: Life expectancy by urban and rural classification (GCH) – 2018 to 2022



# In the community

- Peers in ED pilot set to launch at Middlemore Hospital.
- New pilot with Plunket to deliver childhood immunisations, increasing access and boosting immunisation rates.
- One year after introducing HPV Primary screening and self-testing in New Zealand, over 80% of women screened have chosen to self-test. This easier, less invasive option has helped raise cervical screening coverage to 70%, with a strong focus on reaching Māori and Pacific wāhine.



# Mental Health and Addiction Targets

Stakeholder Hui – 7 November

# In addition to Five Health Targets there are Five MH&A targets

80% of people accessing **specialist** mental health and addiction services are seen within three weeks of referral

Faster access to specialist mental health and addiction services



80% of people accessing **primary** mental health and addiction services through the Access and Choice programme are seen within one week of referral

Faster access to primary mental health and addiction services



95% of mental health and addiction-related **emergency department** presentations are admitted, discharged, or transferred from an emergency department within 6 hours of arrival

Shorter mental health and addiction-related stays in emergency departments (ED)



**Train** 500 mental health and addiction professionals each year

Increased mental health and addiction workforce development



25% of MH&A **investment** is allocated towards prevention and early intervention

Strengthened focus on prevention and early intervention



# Implementing the Targets

- ❖ Four of five **mental health targets** are new
- ❖ Performance infrastructure will need to be developed
- ❖ Data is incomplete and work is needed on accuracy
- ❖ *Five **health targets** are well established measures*
- ❖ *Improvement infrastructure in place*



Expectation that we will “catch up” with health targets  
Much work to do to get reliable measurement in place

# Progress

- ❖ High-level implementation plans (for data and performance improvement) - endorsed by the Minister for Mental Health (September)
- ❖ Detailed implementation plans - development underway (draft to Minister in November)
- ❖ Work to initiate quarterly reporting and generate dashboards to guide improvement effort – underway

# Challenges

- ❖ Programme of work to improve data – underway
- ❖ Target implementation and performance improvement infrastructure – planning in progress
- ❖ Wide engagement necessary across NGOs, Regional and District leads including Hauora Māori and Pacific teams

# Approach to detailed implementation planning



Establish **working groups** with subject matter experts to shape the plans.



Develop **intervention logic** to consider performance improvement in the context of the patient pathway.



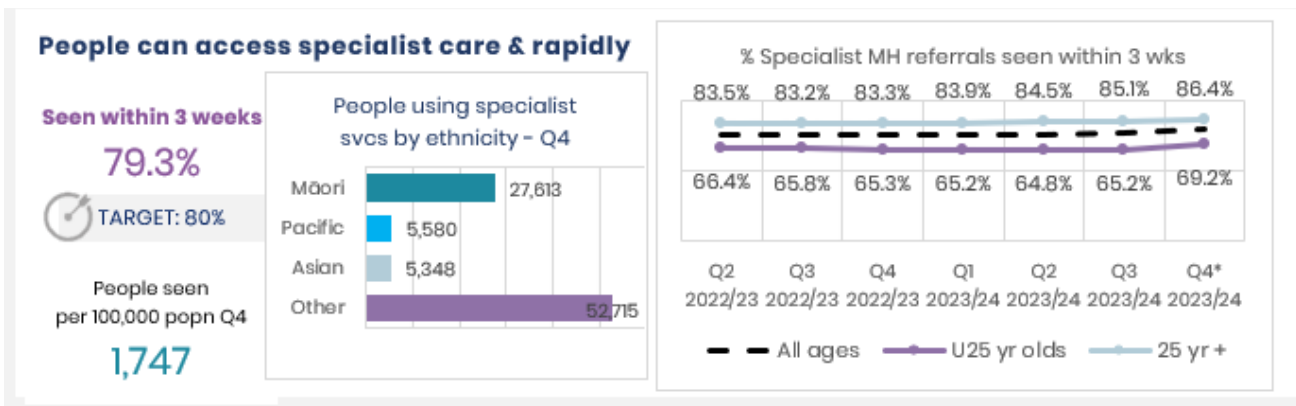
- Draft plans** detailing
- **existing actions** for performance improvement and planned data improvement
  - steps to **establish improvement infrastructure**



Establish **improvement infrastructure** to develop future iterations of the plan.



# Delivery volumes 23/24 – Access to Specialist Services Target



**153,114\*** in-scope activities were delivered in the **2023/24 FY**. Of these:

- **1,262 crisis** attendances in the **community**
- **10,133 crisis** attendances in **Emergency Departments**
- **127,634** were non-crisis activities

*Only **first** in scope activity counted (where one referral leads to several contacts and/or bed nights)*



# Thank you

**Te Kāwanatanga o Aotearoa**  
New Zealand Government

**Health New Zealand**  
Te Whatu Ora

# Q&A session



# Karakia

Kia whakairia te tapu  
Kia wātea ai te ara  
Kia turuki whakataha ai  
Kia turuki whakataha ai  
Haumi e. Hui e. Tāiki e!

*Restrictions are moved aside  
So the pathway is clear  
To return to everyday activities.*